



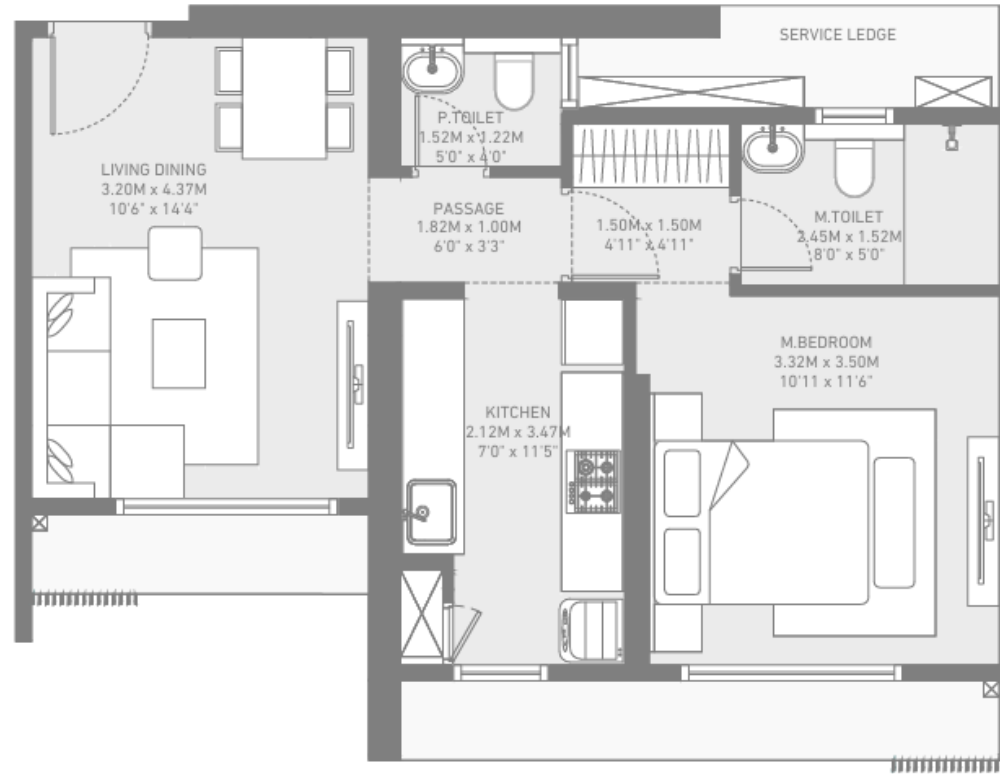
# 1-BHK LAYOUT

# TOWER-1/2

## Unit-07-1BHK

Floor - 1-4, 6-9, 11-14, 16-18, 21-24, 26-29, 31-34, 36-37

TOTAL AREA - 45.28 SQM (487.38 SQFT)



RERA CARPET AREA - 45.28 SQM (487.38 SQFT)





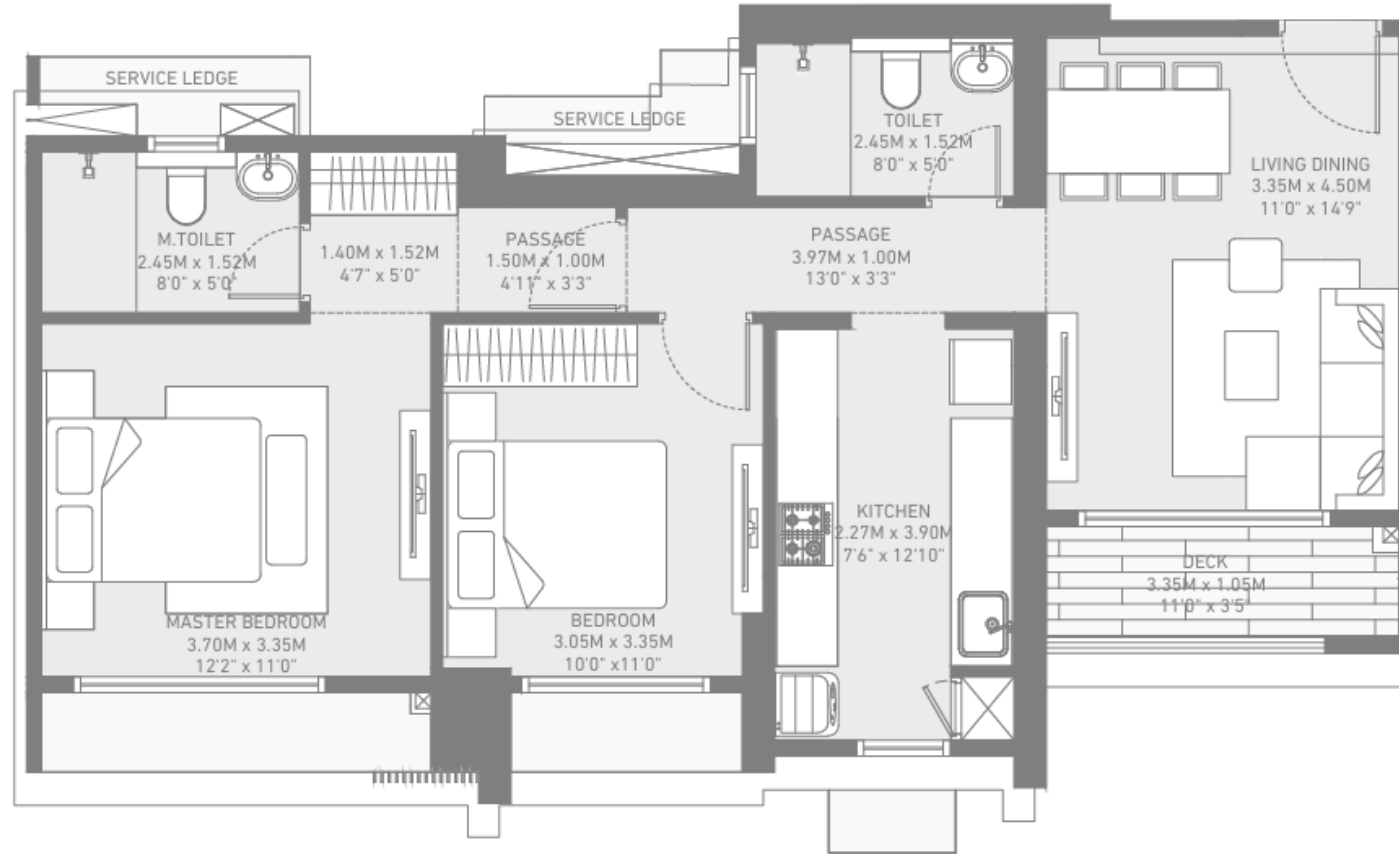
# 2-BHK LAYOUT

# TOWER-3

## Unit-06-2BHK-P

Floor - 1-4, 6-9, 11-14, 16-24, 26-29, 31-34, 36-37

TOTAL AREA - 68.94 SQM (742.05 SQFT)



RERA CARPET AREA - 65.49 SQM (704.91 SQFT) | BALCONY/DECK AREA-3.45 SQM (37.14 SQFT)

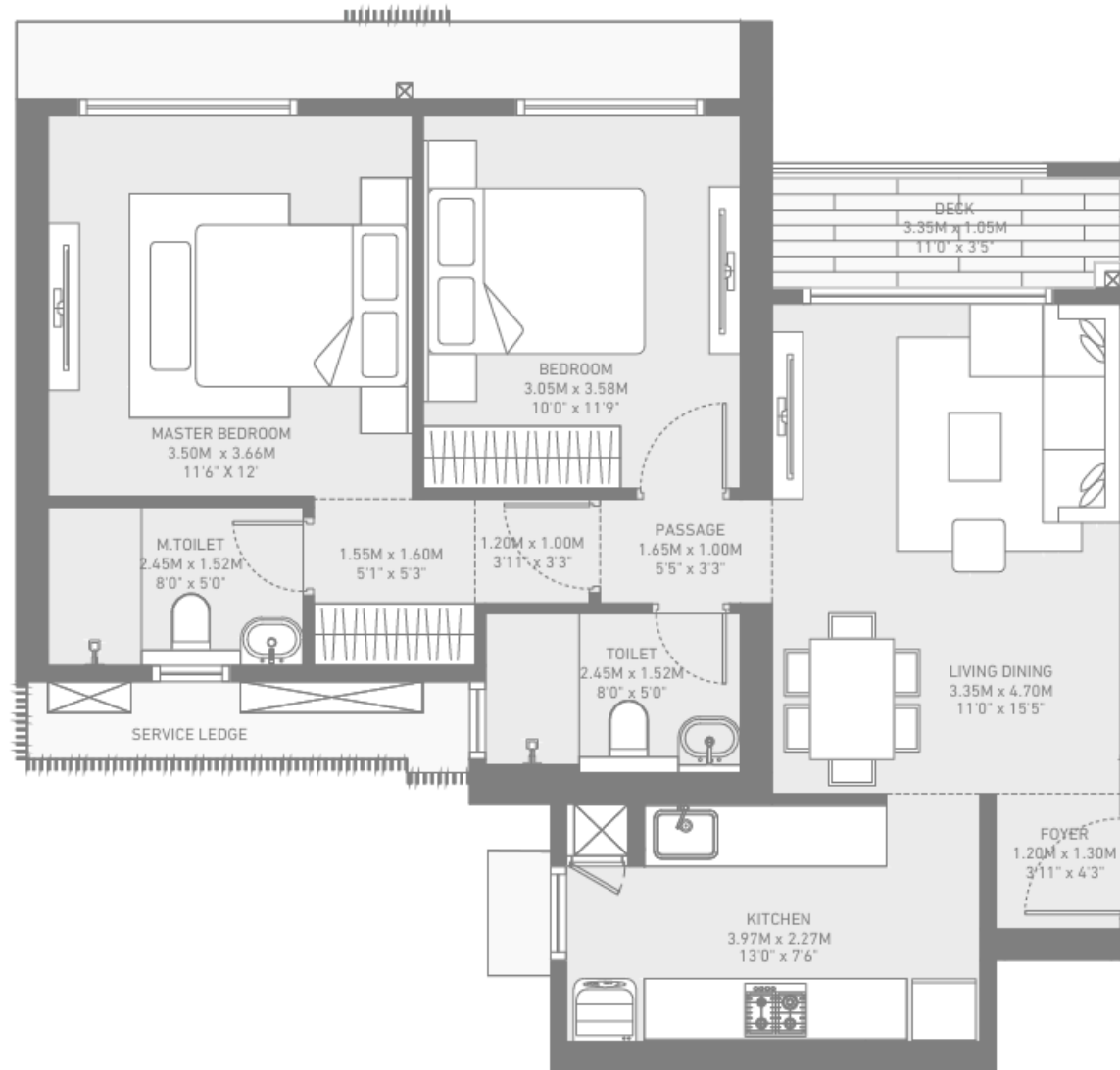


# TOWER-1/2

## Unit-01- 2BHK-P

Floor - Podium 1, Podium Top, 1-37

TOTAL AREA - 70.13 SQM (754.86 SQFT)



RERA CARPET AREA - 66.68 SQM (717.72 SQFT) | BALCONY/DECK AREA-3.45 SQM (37.14 SQFT)

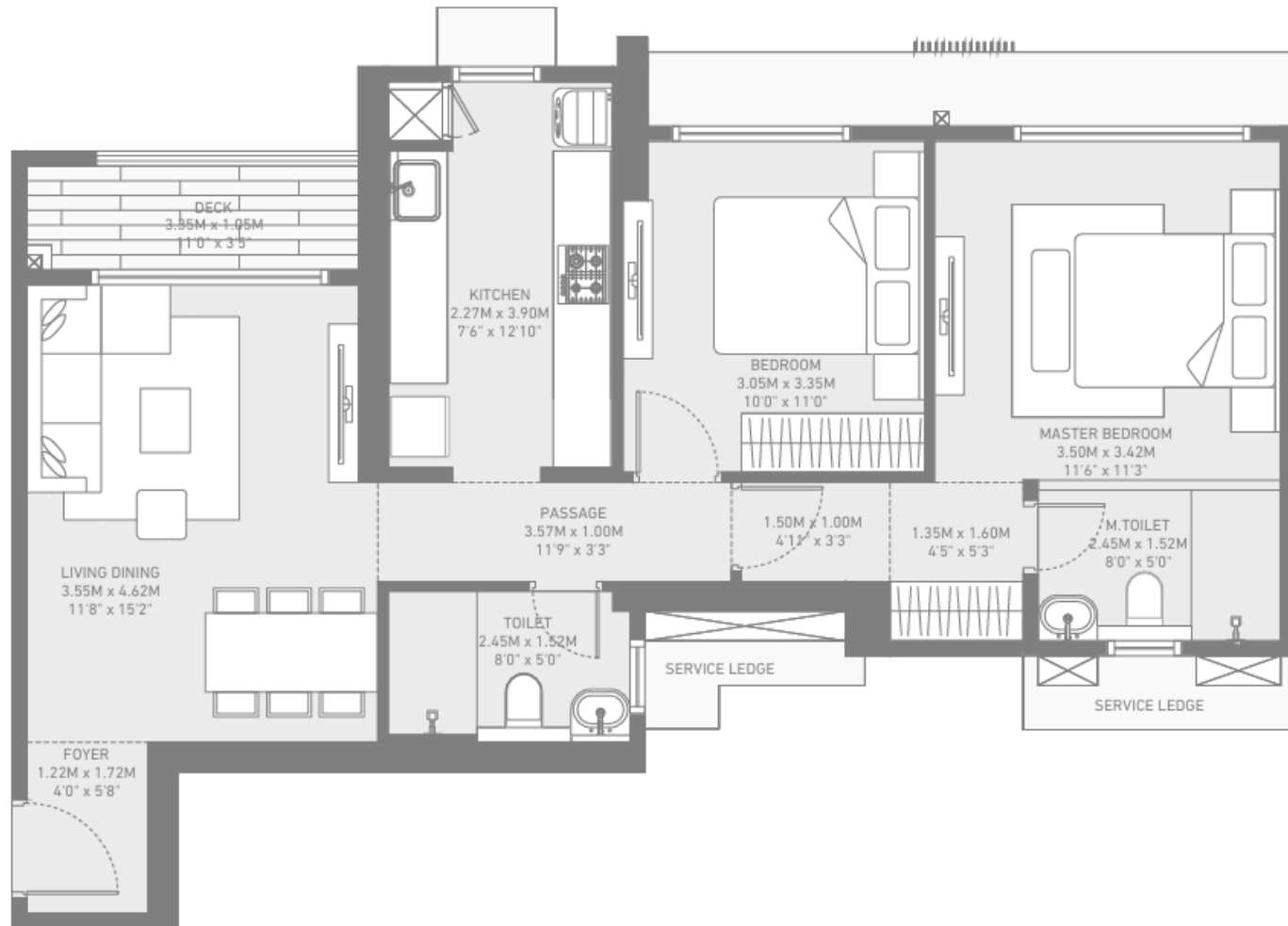


# TOWER-1/2

## Unit-04-2BHK-P

Floor - Podium 1, Podium Top, 1-37

TOTAL AREA - 70.88 SQM (762.94 SQFT)



RERA CARPET AREA - 67.43 SQM (725.81 SQFT) | BALCONY/DECK AREA-3.45 SQM (37.14 SQFT)



# TOWER-5/6

## Unit-02-2BHK-L

Floor - 1-4, 6-9, 11-14, 16-18, 21-24, 26-29, 31-34, 36-39

TOTAL AREA - 82.44 SQM (887.38 SQFT)



RERA CARPET AREA - 76.63 SQM (824.85 SQFT) | BALCONY/DECK AREA-5.81 SQM (62.54 SQFT)





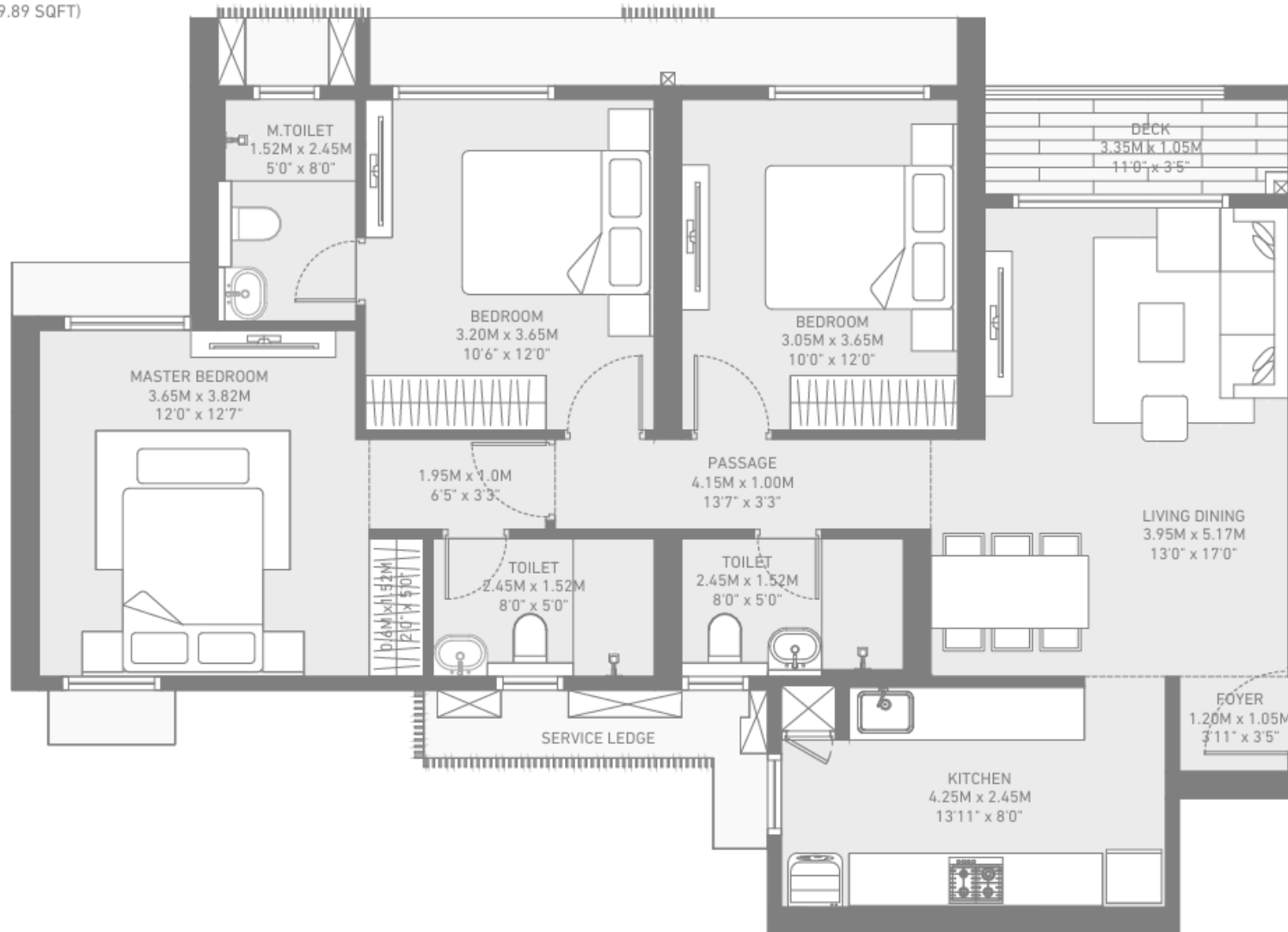
# 3-BHK LAYOUT

# TOWER-3

## Unit-01-3BHK-P

Floor - Podium 1, Podium Top, 1-37

TOTAL AREA - 94.75 SQM (1019.89 SQFT)



RERA CARPET AREA - 91.30 SQM (982.75 SQFT) | BALCONY/DECK AREA-3.45 SQM (37.14 SQFT)

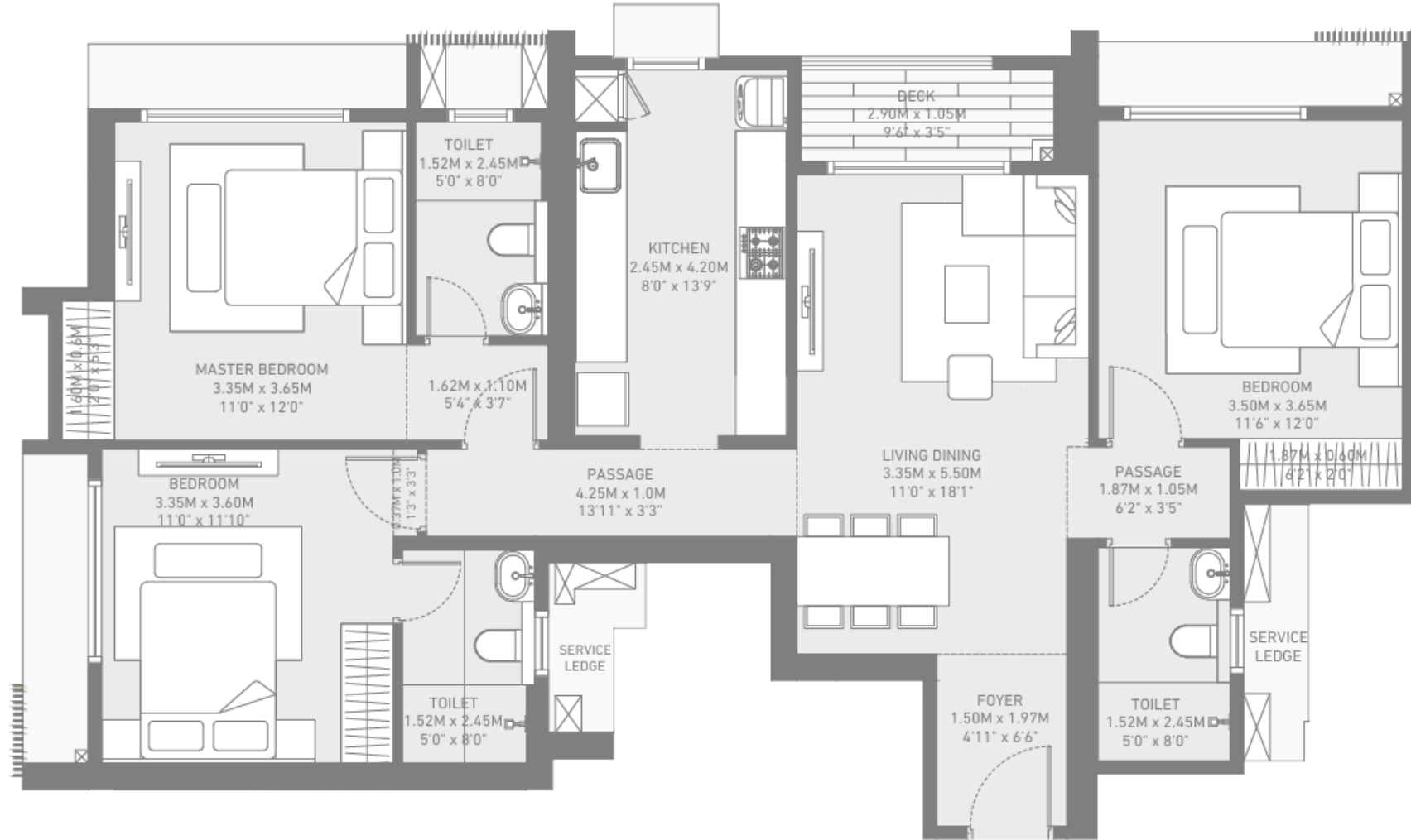


# TOWER-5/6

## Unit-01-3BHK-L

Floor - 1-39

TOTAL AREA - 98.18 SQM (1056.80 SQFT)



RERA CARPET AREA - 95.20 SQM (1024.72SQFT) | BALCONY/DECK AREA-2.98 SQM (32.08 SQFT)

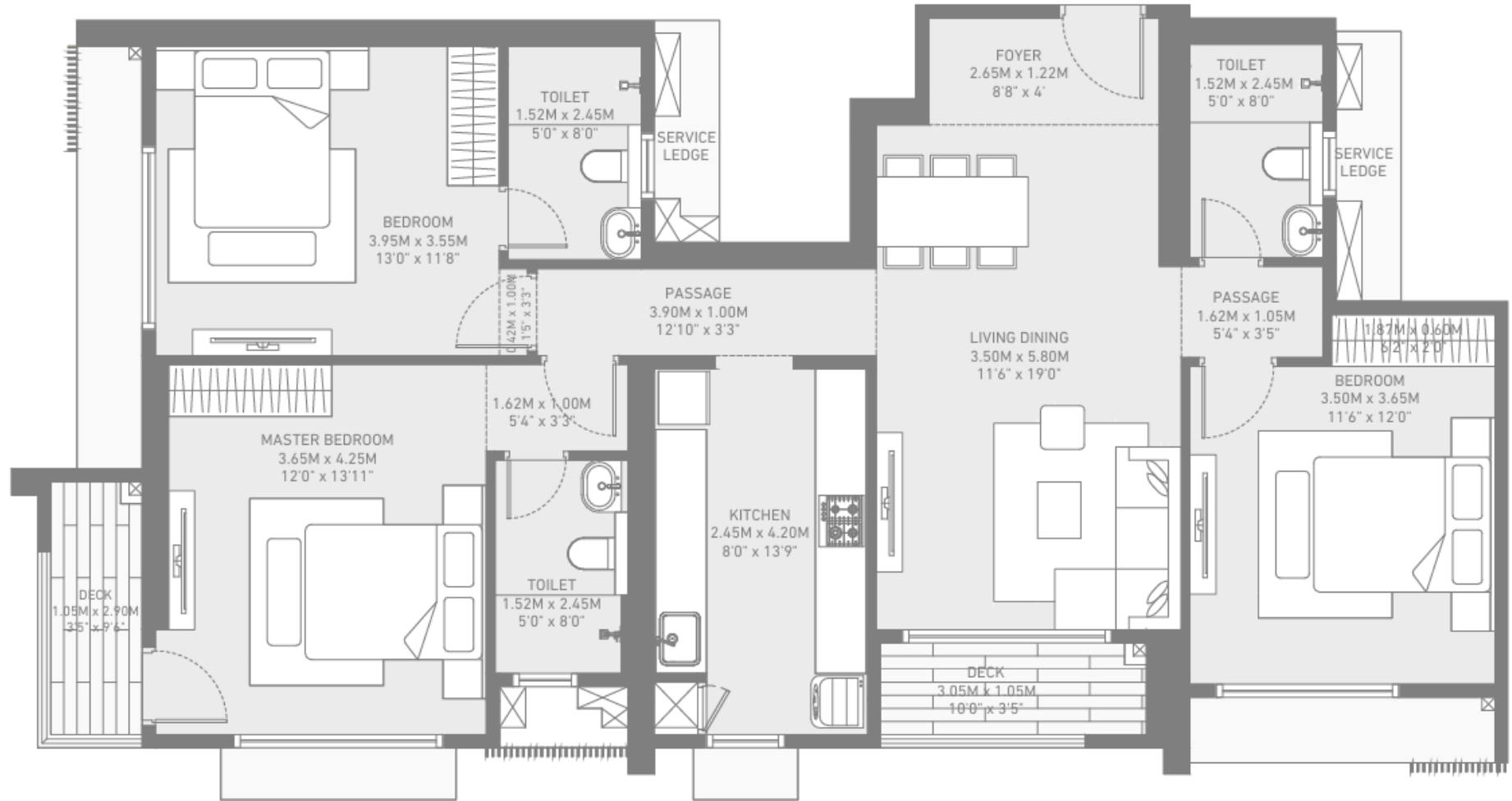


# TOWER-5/6

## Unit-06-3BHK-L

Floor - Podium Top, 1-39

TOTAL AREA - 108.28 SQM (1165.33 SQFT)



RERA CARPET AREA - 102.18 SQM (1099.87SQFT) | BALCONY/DECK AREA-6.10 SQM (65.66 SQFT)



# PRICING DETAILS

<u>Typology</u>	<u>Carpet Area (Sq.Ft.)</u>	<u>Starting AV (In Cr.)</u>	<u>EOI Amount</u>
1BHK	475-500	0.99+	2 Lacs
2BHK	730-760	1.56+	3 Lacs
2BHK Lux	875-895	1.86+	3 Lacs
3BHK	1010-1050	2.14+	4 Lacs
3BHK Lux	1150-1175	2.45+	5 Lacs

\*SDR,GST,PLC & Possession Charges Extra.

\*PreLaunch Benefits will be applicable on 1st 300 Families